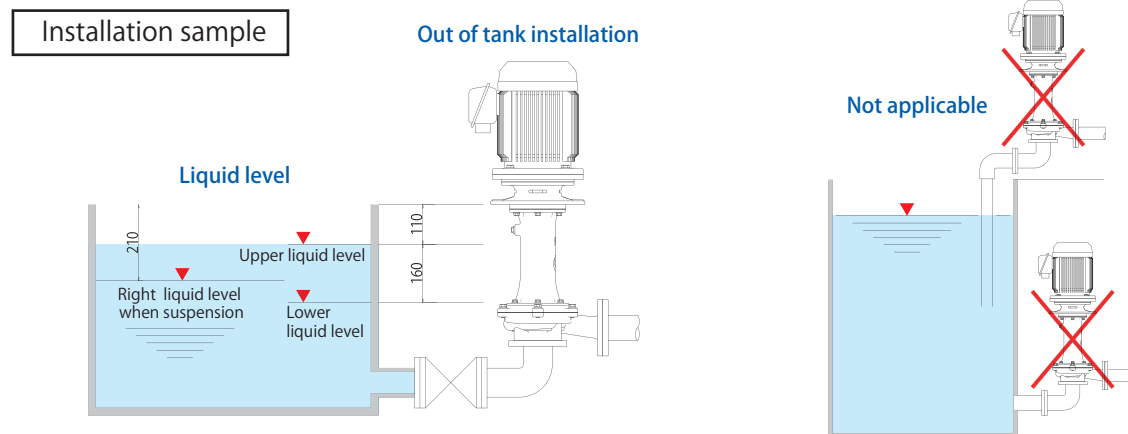


■ Cautions when installig



- (1) If the liquid level is higher than the motor flange of the pump, liquid leaks from the top of the pump, because of the sealless structure.
Install by reference to the above picture and manual.
- (2) If there is air in the casing or suction pipe, priming failure may occur. Do not make the space where air stays. It causes the air lock (Dry running).
- (3) Tightening piping
Use M16 bolts to connect the flange of suction and discharge side of the pump and tighten them evenly and with an appropriate torque.
- (4) Suction pipe should be short and less bending. Install pipe supports not to apply a load to the pump.
When the pump is used for high temperature liquid (40 degrees and more), install bends and expansion joints not to apply a load to the pump for heat expansion.
* Especially, metal pipes are used for strong sulfuric acid or caustic soda. Observe the above prohibitions.
- (5) Transferring high temperature liquid makes saturated vapor pressure increase and the suction ability is decreased.
It is recommended to shorten piping and less bending as possible to prevent cavitation.
- (6) Do not make dust or foreign objects enter in the pump through the suction piping.
When a strainer is set at the suction inlet, clean it regularly to minimize loss resistance. If it is clogged, it may cause much damage to the pump performance and fuction.
- (7) Consider the bolt material (SUS304) when using the pump in a tank.

Comprehensive Manufacturer of Environmental Equipment
Challenging the Liquid Transfer Technology.

World Chemical Co., Ltd.
URL <http://www.wcc.co.jp/en>
E-mail overseaschemical@wcc.co.jp
(English only)

〈Head office〉
3F., ANTEX24, 1-1-14 Taito, Taito-ku, Tokyo,
110-0016 Japan
☎ +81-3-5818-5130 FAX +81-3-5818-5131
Overseas dept. +81-3-5818-5134

〈Nagoya office〉
9F., Daiei Bldg., 1-11-20 Nishiki, Naka-ku,
Nagoya-shi, Aichi, 460-0003 Japan
☎ +81-52-253-8426 FAX +81-52-253-8436

〈Osaka office〉
3F., Kotani park Bldg., 1-19-25 Edobori, Nishi-ku,
Osaka-shi, Osaka, 550-0002 Japan
☎ +81-6-6467-8565 FAX +81-6-6467-8566

〈Fukuoka office〉
5F., 3rd Sunlife Bldg., 2-5-19 Hakataeki-higashi,
Hakata-ku, Fukuoka-shi, Fukuoka, 812-0013 Japan
☎ +81-92-710-6001 FAX +81-92-710-6125

〈Tsukuba factory〉
6127-5 Onogo-machi, Joso-shi, Ibaraki,
300-2521 Japan
☎ +81-297-24-1071 FAX +81-297-24-1075

WORCHEMI TAIWAN CO., LTD.
台湾華爾多科技股份有限公司
42955 台中市神岡區中山路915號
No.915, Zhongshan Rd., Shengang Dist.,
Taichung City 42955, Taiwan (R.O.C.)
☎ 886-4-2562-8358 FAX 886-4-2562-8351
URL <http://www.worldchemical.com.tw>
E-mail worchemi@ms34.hinet.net

SUZHOU WORLD TECHNOLOGY CO., LTD
蘇州華而多科技有限公司
江蘇省蘇州市相城經濟開發區富元路402號
402, Fu Yuan Road, Xiang Cheng, Economic District,
Su Zhou, China
☎ 86-512-6579-8212 FAX 86-512-6579-8215
URL <http://www.worldchemical.com.cn>
E-mail worldchemical@wcs.szbnet.com

WORLD CHEMICAL USA, INC.
25691 Atlantic Ocean Dr. Unit B-15 Lake Forest, CA 92630, U.S.A
☎ 1-949-462-0900 / 888-860-3364
URL <http://www.worldchemicalusa.com>
E-mail wca@worldchemicalusa.com

■ Note



LONseries

Vertical Sealless Pump DRYFREE S



<Model description>

YD-5005LON3-SU-ND51

Dis. bore

40 : 40A
50 : 50A

Output

01 : 0.75kW
02 : 1.5kW
03 : 2.2kW
05 : 3.7kW

Model

Motor type

1 : Special motor
or without motor
3 : IE3

Sealing

N : Sealless

Frequency

5 : 50Hz
6 : 60Hz

Main material

SU : SCS16
(Equivalent SUS316L)

O-ring material

D : FPM
E : EPDM
P : PTFE

S.G.

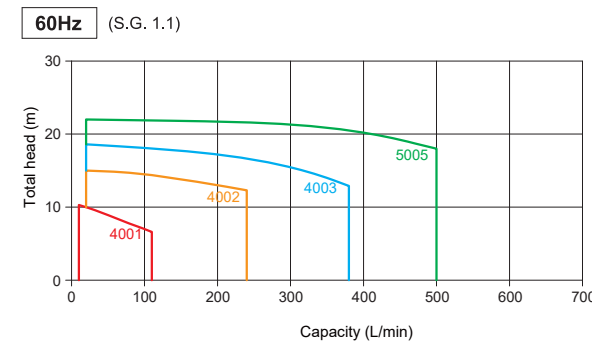
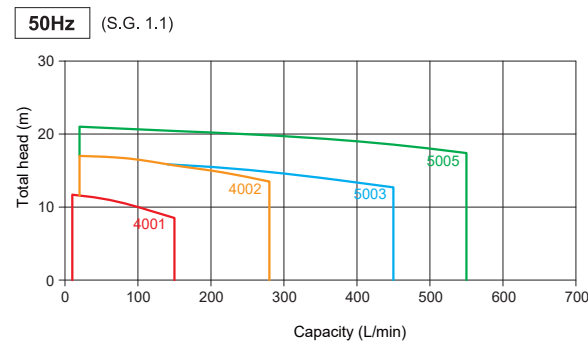
1 : 1.1
※ Ask us,
if other S.G. is
necessary.

<Standard specifications>

Model	Bore (mm)		Performance point		THD - Capacity (m-L/min)	S.G.	Output (kW)	Weight (kg)	Upper temp. limit (°C)
	Suction	Discharge	50Hz	60Hz					
YD - 4001LON3	50A	40A	10-100	7-100	1.1	0.75	41	80	
YD - 4002LON3	50A	40A	13-200	13-200	1.1	1.5	43	80	
YD - 4003LON3	50A	40A	—	14-350	1.1	2.2	45	80	
YD - 5003LON3	65A	50A	14-350	—	1.1	2.2	45	80	
YD - 5005LON3	65A	50A	18-500	18-500	1.1	3.7	60	80	

Please keep the following minimum liquid measure during operation to cool the inside of the pump.
* Motor output 0.75kW : 10L/min * Motor output 1.5 - 3.7kW : 20L/min
* When special bore or performance is required, please ask us.

<Performance curve>



■ Use

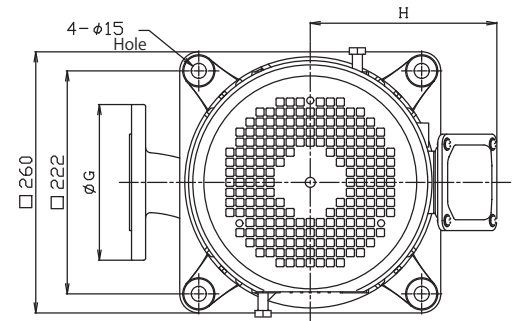
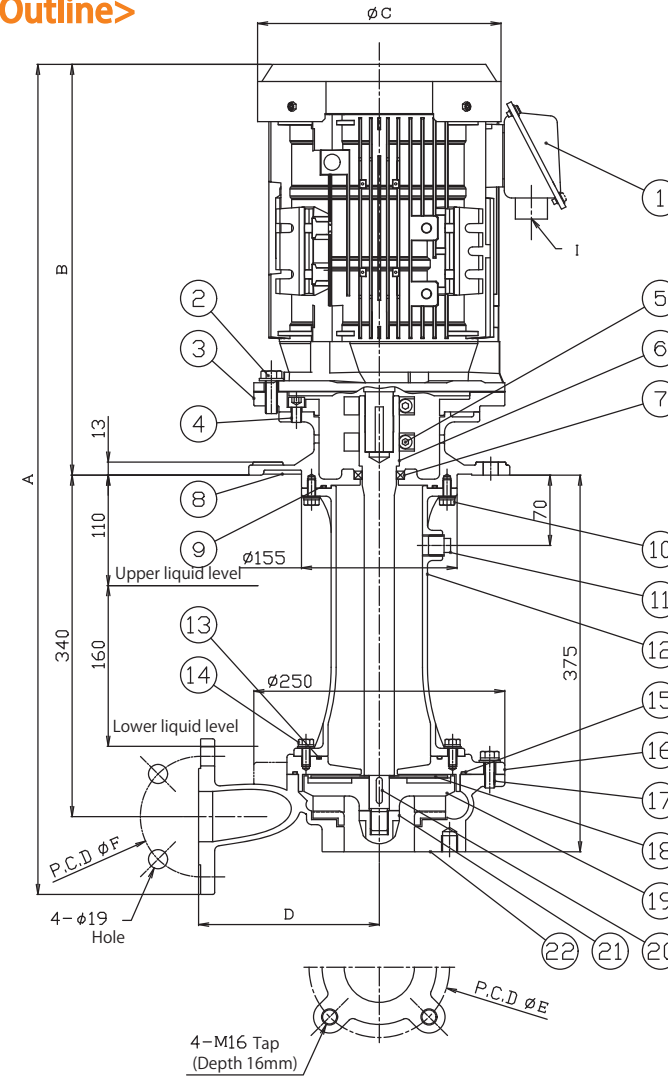
Possible to use in and out of tanks and suitable for circulation operation!

- For desmear treatment equipment
- For blackening treatment equipment
- For electroless nickel plating equipment
- For high temp. washing equipment

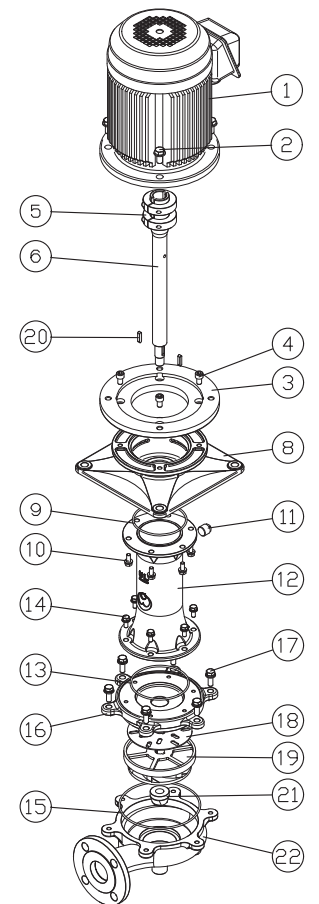
■ Feature

- Made of stainless offering resistance to high temperature and corrosion. The pump body is made of SCS16 (Equivalent SUS316L) and suitable for multi-stratified & densified Print circuit board processing line such as desmear treatment or electroless nickel plating equipment.
- Sealless structure: Strong against heat / abrasion. Reliable design which is not effected by dry running or slurry mixing, because of the sealless structure.
- Easy maintenance. There is not any sliding parts like mechanical seals, so no need to replace parts periodically.

<Outline>



<Exploded view>



<Dimension>

Model	A	B	φC	D	φE	φF	φG	H	I
YD - 4001LON3	708.5	298.5	170	160	120	105	140	159	G (PF) 3/4
YD - 4002LON3	746	336	202	160	120	105	140	168	G (PF) 3/4
YD - 4003LON3	775	365	202	160	120	105	140	168	G (PF) 3/4
YD - 5003LON3	782.5	365	202	180	140	120	155	168	G (PF) 3/4
YD - 5005LON3	826.5	409	243	180	140	120	155	187	G (PF) 3/4

<Parts list>

No.	Parts name	Material	Q'ty	No.	Parts name	Material	Q'ty
①	Motor		1	⑫	Connecting pipe	SCS 16	1
②	Bolt for motor	SUS 304	4	⑬	O-ring for back plate	EPDM·FPM·PTFE	1
③	Motor mounting plate	FC200	1 (Only 3.7kW)	⑭	Bolt for back plate	SUS 304	6
④	Bolt for pump base	SUS 304	4 (Only 3.7kW)	⑮	O-ring for casing	EPDM·FPM·PTFE	1
⑤	Slit collar	SUS 304	2	⑯	Back plate	SCS 16	1
⑥	Shaft	SUS 316L	1	⑰	Bolt for casing	SUS 304	6
⑦	Gas seal	SUS 316+PTFE	1	⑱	Impeller disk	SUS 316L	1
⑧	Pump base	SCS 13	1	⑲	Impeller	PTFE	1
⑨	O-ring for pump base	EPDM·FPM·PTFE	1	⑳	Key	SUS 316	2
⑩	Bolt for connecting pip	SUS 304	6	㉑	Impeller nut	SUS 316L	1
⑪	Plug	SUS 316	1	㉒	Casing	SCS 16	1